

1050 *Type 1 PVC Sheet for Fabricating, Machining, Forming*

Ultra-high quality, corrosion resistant, fire-rated sheet up to 4 in. (102 mm) thick in gray, white and black for fabricating, machining and thermoforming applications

Boltaron 1050 sheet is a monolithic Type 1 PVC sheet that is free of pits, voids and inclusions, and not subject to delamination associated with competitive heavy gauge sheet.

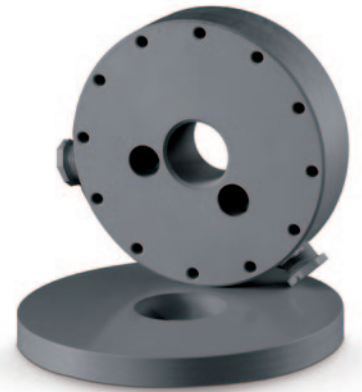
It is inert to harsh chemicals across the entire pH range, making it suitable for applications in which acids and caustics are handled. Since it does not ionize like stainless steel

and high alloys, it is also ideal for applications involving ultrapure water, reagent-grade chemicals or other contamination-sensitive products.

Boltaron 1050 sheet is offered in lengths to 96 in. (2438 mm), widths to 48 in. (1219 mm) and thicknesses from .032 to 4 in. (0.81 to 102 mm).

Smooth on both sides, it is available from stock in dark gray (no minimums), and in white and black (low minimums). It is also available in custom colors, custom textures and custom sizes, and/or with poly masking (low minimums).

The sheet carries a UL 94 V-0 fire rating and conforms to ASTM D-1784 standards, conforming to a



wide range of application requirements.

Boltaron 1050 is readily sawn, drilled, tapped, routed and otherwise machined using conventional tools, and can be brake formed (thinner gauges), heat welded, adhesive bonded and mechanically fastened, allowing rapid fabrication of a broad range of high-integrity parts and assemblies.

APPLICATIONS

- Fume Hoods and Ducts
- Machined Parts
- Fume Scrubbers
- Acid Etching Machines
- Acid Tanks and Linings

FEATURES

- Solid, monolithic structure
- Free of pits, voids, inclusions
- Gauges from .032 to 4 in. (0.81 to 102 mm)
- Lengths to 96 in. (2438 mm), widths to 48 in. (1219 mm)
- Custom sizes at low minimums
- Extreme chemical resistance
- Meets UL 94 V-0 and ASTM D-1784 standards
- Readily machined using conventional tools
- Can be heat welded, adhesive bonded, mechanically fastened
- Dark gray color with smooth surface in stock for rapid shipment
- Standard white and black colors available (low minimums)
- Custom colors and textures available (low minimums)



Boltaron 1050 Type 1 PVC is smooth on both sides and offered in thicknesses up to 4 in. (102 mm) in standard dark gray, white and black colors.

PROPERTIES/RATINGS

PROPERTY	TEST METHOD	TYPICAL VALUES
Mechanical Specific gravity	ASTM D-792	1.37
Tensile strength (PSI)	ASTM D-638	7,400
Elongation Ultimate (%)	ASTM D-638	132
Yield (%)	ASTM D-638	3.5
Modulus of Elasticity (PSI)	ASTM D-638	4.0x10 ⁵
Flexural strength (PSI)	ASTM D-790	12,000
Flexural modulus (PSI)	ASTM D-790	4.2x10 ⁵
Izod impact (Ft. lbs./in. of notch)	ASTM D-256	1-3
Hardness Rockwell R	ASTM D-785	116
Hardness Shore D	ASTM D-2240	82
Compression Strength (PSI)	ASTM D-695	10,830
Shear Strength (PSI)	ASTM-D-732	9,240
Water Absorption 24 hrs. (%)	ASTM D-570	0.032
Thermal Vicat Softening Point (°C)	ASTM D-1525	85
Thermal Expansion (in/in°C)	ASTM D-696	2.95x10 ⁵
Heat Deflection (°F) 264 PSI (annealed)	ASTM D-648	165
Thermal Conductivity (BTU/HR/FT/F/in.)	ASTM C-177	0.72
Specific Heat (CAL/GM°C)	ASTM-C-351	0.20
Electrical Dielectric Strength (Volts/Mil.)	ASTM D-149	552
Volume Resistivity (Ohms/cm)x10 ¹⁴	ASTM D-257	1.48
Dielectric Constant (60Hz)	ASTM D-150	2.910
Dissipation Factor (60Hz)	ASTM D-150	0.018
Loss Index	ASTM D-150	0.051
Flammability UL	UL 94	V-0 ¹

¹Values based on minimum thickness of .032", UL File # E54688

AVAILABILITY

Standard Colors: Dark Gray (2079) (stock)
White (1150) & Black (2803) (min. order required)
Custom Colors: Upon Request (min. order required)
Gauges: .032 to 4.00 in. (102 mm)
Width: 48 in. (1219 mm)
Length: 96 in. (2438 mm)
Custom Sizes: Upon request
Standard Texture: Industrial Smooth (Both Sides)
Custom Textures: Upon Request
Poly Masking: (Upon Request)

OTHER BOLTARON GRADES OF PVC SHEET:

- Boltaron 1050E (Extruded Type 1 PVC)
- Boltaron 4050 (TYPE 2 PVC)

Numerous grades of high performance PVC/acrylic alloys also available for thermoforming and fabricating applications



One General Street
Newcomerstown, Ohio 43832 USA

1 800 342 7444
info@boltaron.com
www.boltaron.com

LIMITATION OF WARRANTY

The application suggestions, specifications and other data described here are based upon experience and information that is believed, by BPP to be reliable. However, BPP makes no express or implied warranty that BOLTARON 1050 will perform in accordance with such specifications in any particular circumstance. Therefore, ALL EXPRESS OR IMPLIED WARRANTIES IN CONNECTION WITH BOLTARON 1050, INCLUDING THE WARRANTIES OF MERCHANTABILITY AND FITNESS FOR A PARTICULAR PURPOSE, ARE EXPRESSLY DISCLAIMED. The prospective user should determine the suitability of BOLTARON 1050 and the application suggestions before actual application.