

1050E *Type 1 Extruded PVC sheet*

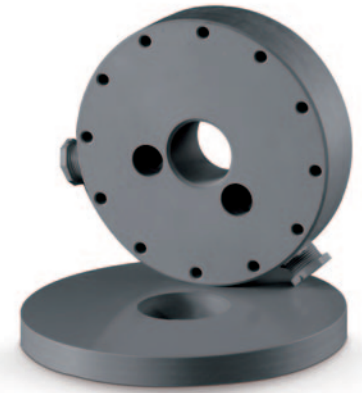
Economical, corrosion resistant, fire-rated sheet up to 1 in. (25.4 mm) thick in dark gray color for fabricating, machining and thermoforming applications

Boltaron 1050E Type 1 PVC is an extruded, corrosion resistant, fire rated sheet with normal impact resistance for fabricating, machining and thermoforming applications. Because it is a monolithic structure that is extruded to desired thicknesses (not bonded laminations) it is not subject to delamination.

Since Boltaron 1050E is also inert to harsh chemicals across the entire pH range, it is especially suited to applications in which acids and caustics are handled. And because it does not ionize like stainless steel and high alloys, it is also ideal for applications involving ultrapure water, reagent-grade chemicals or other contamination-sensitive products.

Boltaron 1050E sheet is offered in lengths to 96 in. (2438 mm), widths to 48 in. (1219 mm) and thicknesses from .060 to 1 in. (1.52 to 25.4 mm), as well as in custom blank sizes.

Smooth on both sides and free of inclusions, it is available from stock in dark gray, and offered in custom colors, custom sizes, and/or with poly masking (low minimums).



The sheet carries a UL 94 V-0 fire rating and conforms to ASTM D-1784 standards, making it suitable for a wide range of application requirements.

Boltaron 1050E is readily sawn, drilled, tapped, routed and otherwise machined using conventional tools, and can be brake formed (thinner gauges), heat welded and adhesive bonded and mechanically fastened, allowing rapid fabrication of a broad range of high-integrity parts and assemblies.



APPLICATIONS

- Fume Hoods and Ducts
- Machined Parts
- Fume Scrubbers
- Acid Etching Machines
- Acid Tanks and Linings
- Other corrosion resistant parts

FEATURES

- Solid, monolithic structure (not a bonded lamination)
- Free of pits, voids, inclusions
- Gauges from .060 to 1 in. (1.52 to 25.4 mm)
- Lengths to 96 in. (2438 mm), widths to 48 in. (1219 mm)
- Custom blank sizes at low minimums
- Extreme chemical resistance
- Meets UL 94 V-0 and ASTM D-1784 standards
- Readily machined using conventional tools
- Can be thermoformed
- Can be heat welded, adhesive bonded, mechanically fastened
- Custom colors and textures at low minimums

Boltaron 1050E Type 1 PVC is smooth on both sides and offered in thicknesses from .060 to 1 in. (1.52 to 25.4 mm) in standard dark gray color.

PROPERTIES/FAR RATINGS

PROPERTY	TEST METHOD	TYPICAL VALUES
Mechanical Specific gravity	ASTM D-792	1.48
Tensile strength (PSI)	ASTM D-638	7,400
Elongation Ultimate (%)	ASTM D-638	132
Yield (%)	ASTM D-638	3.5
Modulus of Elasticity (PSI)	ASTM D-638	4.0x10 ⁵
Flexural strength (PSI)	ASTM D-790	12,000
Flexural modulus (PSI)	ASTM D-790	4.2x10 ⁵
Izod impact (Ft. lbs./in. of notch)	ASTM D-256	1-3
Hardness Rockwell R	ASTM D-785	114
Hardness Shore D	ASTM D-2240	82
Compression Strength (PSI)	ASTM D-695	10,830
Shear Strength (PSI)	ASTM-D-732	9,240
Water Absorption 24 hrs. (%)	ASTM D-570	0.032
Thermal Vicat Softening Point (°C)	ASTM D-1525	94
Thermal Expansion (in/in°C)	ASTM D-696	2.95x10 ⁵
Heat Deflection (°F) 264 PSI (annealed)	ASTM D-648	156
Thermal Conductivity (BTU/HR/FT/F/in.)	ASTM C-177	0.72
Specific Heat (CAL/GM°C)	ASTM-C-351	0.20
Electrical Dielectric Strength (Volts/Mil.)	ASTM D-149	552
Volume Resistivity (Ohms/cm)x1014	ASTM D-257	1.48
Dielectric Constant (60Hz)	ASTM D-150	2.910
Dissipation Factor (60Hz)	ASTM D-150	0.018
Loss Index	ASTM D-150	0.051
Flammability UL	UL 94	V-0 ¹

¹Independent Lab Testing

AVAILABILITY

Standard Color: Dark Gray (2079) (stock)
Custom Colors: Upon Request (min. order required)
Gauges: .060 to 1 in. (1.52 to 25.4 mm)
Width: to 48 in. (1219 mm)
Length: to 96 in. (2438 mm)
Custom Blank Sizes: Upon request (min. order required)
Standard Texture: Industrial Smooth (Both Sides)
Poly Masking: Upon Request

OTHER BOLTARON GRADES OF PVC SHEET:

- Boltaron 1050 (TYPE 1 PVC to 4 in./102 mm)
- Boltaron 4050 (TYPE 2 PVC)

Numerous grades of high performance PVC/acrylic alloys also available for thermoforming and fabricating applications



One General Street
Newcomerstown, Ohio 43832 USA

1 800 342 7444

info@boltaron.com
www.boltaron.com

LIMITATION OF WARRANTY

The application suggestions, specifications and other data described here are based upon experience and information that is believed, by BPP to be reliable. However, BPP makes no express or implied warranty that BOLTARON 1050E will perform in accordance with such specifications in any particular circumstance. Therefore, ALL EXPRESS OR IMPLIED WARRANTIES IN CONNECTION WITH BOLTARON 1050E, INCLUDING THE WARRANTIES OF MERCHANTABILITY AND FITNESS FOR A PARTICULAR PURPOSE, ARE EXPRESSLY DISCLAIMED. The prospective user should determine the suitability of BOLTARON 1050E and the application suggestions before actual application.