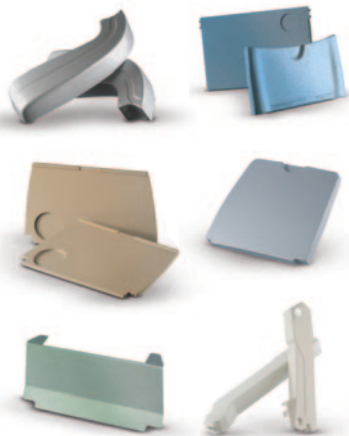


9815M FAR Rated High Impact Metallic Sheet

66% Greater impact resistance than competitive 65/65-rated PVC/Acrylic metallic sheets, plus integral color for unsurpassed scratch resistance

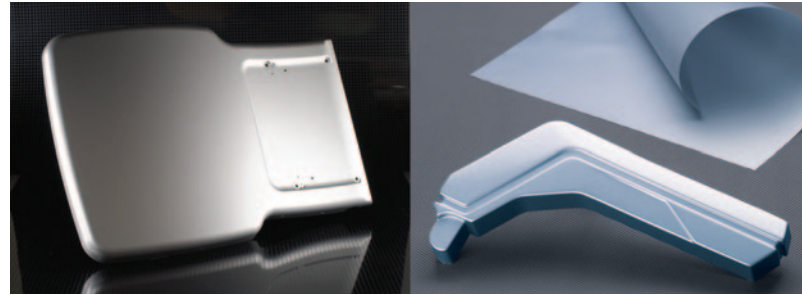
Boltaron 9815M is a proprietary, fire retardant, extruded PVC/Acrylic alloy for aircraft interior components that meets stringent FAA requirements for flammability, smoke generation and heat release while exhibiting exceptional physical properties.

It offers Izod Impact resistance of 5.0 ft lbs/in. (265 J/m)—over 66% higher than competitive 65/65-compliant sheets rated at 3.0 ft lbs/in. (159 J/m)—as well as extreme formability, consistent surface quality, and an unlimited range of colors.



APPLICATIONS

- Class dividers
- Dashboard enclosures
- Galley components
- Lavatory components
- Bull noses
- Video screen bezels
- Personal service units (PSUs)
- Gap covers
- Seat parts
- Sidewall panels
- Tray tables
- Window shades
- Air ducts
- Bulkhead laminates
- Light housings
- Window reveals
- Moldings



And unlike FAR 25.853 (d) rated sheet that is reverse-printed with metallic ink on clear cap film laminated to dissimilar substrate material, Boltaron 9815M is comprised of a cap film with integral metallic coloration, permanently fused to a matching “9815-grade” substrate of a complementary solid color, preventing de-lamination and offering unsurpassed scratch resistance. Since the 9815M

monolithic cap film is a “metallized” version of Boltaron’s 9815 solid color substrate, metallic color selection is unlimited.

Boltaron 9815M is specified by the world’s leading commercial, military and private aircraft and helicopter manufacturers, carriers and interior refurbishing contractors, for thermoformed, fabricated and machined interior components of unequalled durability and metallic appearance.

FEATURES

- 66% Greater impact resistance than competitive 65/65-compliant PVC/Acrylic sheets: 5.0 ft lbs/in. (265 J/m) versus 3.0 ft lbs/in. (159 J/m)
- Integral metallic color for unsurpassed scratch resistance
- Unlimited metallic colors with low minimums, no premiums and fast turnaround. Lot-to-lot color consistency allows undetectable field replacements
- Inclusion-free surface quality
- Extreme formability; allows the sheet to draw readily to the mold, even into deep recesses and sharp corners, maintaining uniform wall thicknesses
- Gauges from 0.40 to .250 in. (1.02 to 6.35 mm), widths to 48 in. (1219 mm) and lengths to 120 in. (3048 mm) with custom sizes on request

Boltaron 9815M sheet is offered in unlimited colors in Suede (SD) surface texture



PROPERTIES/FAR RATINGS

PROPERTY	TEST METHOD	TYPICAL VALUES
Specific Gravity	ASTM D-792	1.574
Tensile Strength	ASTM D-638	5,500 PSI / 38 Mpa
Flexural Strength	ASTM D-790	8,700 PSI / 60 Mpa
Flexural Modulus	ASTM D-790	410,000 PSI / 2827 Mpa
Izod Impact (@ 73°F / 23°C)	ASTM D-256	5.0 ft lbs/in. 265 J/m
Hardness Rockwell	ASTM D-785	107
Heat Deflection (annealed)	ASTM D-648	170°F @ 264 PSI 77°C @ 1.8 Mpa
Flammability	FAR 25.853 A1,(i) FAR 25.853 A1,(ii)	PASS ALL PASS ALL
Heat Release Peak - Hrr, kW/m 2 Min - Hrr, kW-min/m	FAR 25.853 A1 F, Part IV -	<65 <65
NBS Smoke Ds @ 1.5 Min Ds @ 4 Min	F814-84(b)	<100 <200
Thermal Expansion	ASTM D-696	1.67 X 10 ⁻⁵ / °F 3 X 10 ⁻⁵ / °C

THERMOFORMING PARAMETERS

Mold Shrinkage	0.005 - 0.007 in. / in.
Forming Temperature	335 - 370°F / 168 - 185°C
Typical Heater Settings	30 - 50% Top, 50 - 70% Bottom
Drying	Not required

Take the compromise out of FAR compliance with Boltaron 9815M



Boltaron Performance Products, LLC.

One General Street
Newcomerstown, Ohio 43832 USA

1 800 342 7444

info@boltaron.com
www.boltaron.com

OTHER BOLTARON FAR RATED GRADES:

- Boltaron 4205
- Boltaron 4300
- Boltaron 4330
- Boltaron 4350
- Boltaron 4800
- Boltaron 6530
- Boltaron 6540
- Boltaron 6800
- Boltaron 6800E
- Boltaron 9200/9200C
- Boltaron 9230/9230C
- Boltaron 9250/9250C
- Boltaron 9815
- Boltaron 9815E
- Boltaron 9815F
- Boltaron 9816
- Boltaron 9915