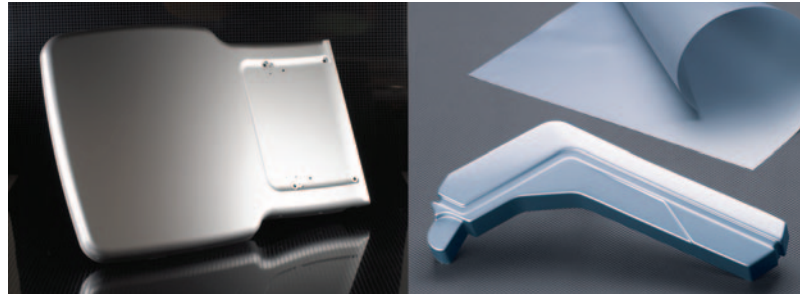


## 9915 FSTH *Fully Compliant Aircraft Grade Thermoplastic Sheet*

### Airbus and Boeing compliance never looked so good

With Boltaron 9915 FSTH, designers now have the flexibility to produce visually stunning aircraft interior components, while also meeting all Boeing and Airbus requirements for flammability, smoke, toxicity, and heat release.

Constructed with Lexan XHR6000 high performance thermoplastic sheet manufactured by SABIC Innovative Plastics, Boltaron 9915 FSTH is a proprietary composite offered in a combination of decorative designs, colors, and textures unavailable from any other film and sheet supplier.



Offered in decorative effects such as wood-grain, pearlescent, and carbon-fiber, Boltaron 9915 FSTH gives designers the flexibility to produce eye-popping 2-and 3-dimensional seating components, shrouds, and panels. In addition, Boltaron 9915 FSTH is the only fully compliant aircraft grade

thermoplastic sheet with a low-gloss surface after thermoforming, allowing for consistent part-to-part appearance.

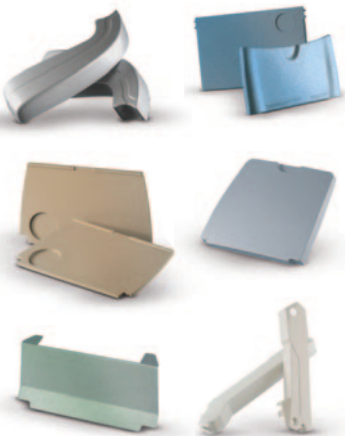
With an unparalleled combination of physical properties and design flexibility, compliance with toxicity standards never looked better.

### APPLICATIONS

- Class dividers
- Dashboard enclosures
- Galley components
- Lavatory components
- Bull noses
- Video screen bezels
- Personal service units (PSUs)
- Gap covers
- Seat parts
- Sidewall panels
- Tray tables
- Window shades
- Air ducts
- Bulkhead laminates
- Light housings
- Window reveals
- Moldings

### FEATURES

- Unlimited combinations of surfaces such as wood grain, pearlescent, and carbon fiber
- Low-gloss surface after thermoforming allows for consistent appearance
- Shatter-resistant construction for a safer passenger environment
- Low minimums and fast turnaround
- Seamless in-field mating with other Boltaron aircraft grade sheet
- Meets toxicity requirements per ABD0031, BSS7239, and D6-5137
- Inclusion-free surface quality
- Gauges from 0.040 to .187 in. (1 to 4.75 mm), standard widths of 48 in. (1219 mm) and lengths of 96 in. (2438 mm) with custom sizes on request



Please contact your Boltaron representative for a catalog containing surface options



## PROPERTIES/FAR RATINGS

PROPERTY	TEST METHOD	TYPICAL VALUES
Specific Gravity	ASTM D-792	1.34
Tensile Strength	ASTM D-638	10,600 PSI / 73 Mpa
Flexural Strength	ASTM D-790	16,700 PSI / 115 Mpa
Flexural Modulus	ASTM D-790	363,000 PSI / 2502 Mpa
Izod Impact (@ 73°F / 23°C)	ASTM D-256	3.63 ft lbs/in. 194 J/m
Heat Deflection (Unannealed)	ASTM D-648	250°F @ 264 PSI 121°C @ 1.8 Mpa
Flammability	FAR 25.853 A1,(i) FAR 25.853 A1,(ii) FAR 25-853 D	PASS ALL PASS ALL PASS ALL
Heat Release Peak - Hrr, kW/m 2 Min - Hrr, kW-min/m	FAR 25.853 A1 F, Part IV -	<65 <65
Smoke and Toxicity	ABD-0031 BSS-7239 D6-51377	PASS PASS PASS
Ds @ 1.5 Min Ds @ 4 Min	F814-84(b)	<100 <200
Coefficient of Linear Thermal Expansion, Flow (-40 to 40°C)	ISO 11359-1. -2	3.2 X 10 <sup>-5</sup>

## THERMOFORMING PARAMETERS

Mold Shrinkage	0.5 - 0.7 %
Forming Temperature	360 - 400°F / 182 - 204°C
Typical Heater Settings	30 - 50% Top, 50 - 70% Bottom
Drying	Time Required (Hours) @ 121°C (250°F)
.093"	4
.118"	6
.150"	8
.177"	12

**Take the compromise out of FAR compliance with Boltaron 9915 FSTH**



**Boltaron Performance Products, LLC.**

One General Street  
Newcomerstown, Ohio 43832 USA

**1 800 342 7444**

**info@boltaron.com**  
**www.boltaron.com**

### OTHER BOLTARON FAR RATED GRADES:

- Boltaron 4205
- Boltaron 4300
- Boltaron 4330
- Boltaron 4350
- Boltaron 4800
- Boltaron 6530
- Boltaron 6540
- Boltaron 6800
- Boltaron 6800E
- Boltaron 9200/9200C
- Boltaron 9230/9230C
- Boltaron 9250/9250C
- Boltaron 9815
- Boltaron 9815E
- Boltaron 9815F
- Boltaron 9815M
- Boltaron 9816