

# Boltaron® 9815 with a Pearlescent Effect

THERMOFORMABLE FAR-RATED SHEET FOR AIRCRAFT INTERIORS

## CHARACTERISTICS

- Has a deep, rich pearlescent effect
- Available in the industry's widest range of pressed and extruded textures

## USES

- Ideal for 2D or 3D aircraft interior parts
- Seat backs and tray tables
- Decorative trim and finish

## PERFORMANCE DETAILS

### FAR RATINGS

FAR 25.853(a)(i)	(Flammability) (Vertical burn, 60 sec) Pass
FAR 25.853(a)(ii)	(Flammability) (Vertical burn, 12 sec) Pass
FAR 25.853(d)(Part IV)	(OSU Heat Release) (Peak - HRR, kW/m <sup>2</sup> <65) (2 Min - HRR, kW min/m <sup>2</sup> <65)
FAR 25.853(d)(Part V)	(NBS Smoke) (Ds Max <200)

### PROPERTIES

<b>Specific Gravity</b> (ASTM D792)	1.57	
<b>Tensile Strength</b> (ASTM D638)	5,840 psi	40.3 MPa
<b>Flexural Strength</b> (ASTM D790)	10,236 psi	70.6 MPa
<b>Flexural Modulus</b> (ASTM D790)	574,000 psi	3,958 MPa
<b>Izod Impact Notched</b> (ASTM D256)	73 °F 2.0 ft-lb/in	23 °C 106.8J/m
<b>Hardness Rockwell</b> (ASTM D785)	102	
<b>Heat Deflection Annealed</b> (ASTM D648)	165 °F @264 psi	73.8 °C @1.8 MPa
<b>Thermal Expansion</b> (ASTM D696)	2.7 x 10 <sup>-5</sup> /°F	4.9 x 10 <sup>-5</sup> /°C

\* Independent lab tests. All tests at 73 °F (23 °C) in dry conditions unless otherwise noted.

### SHEET SIZES

#### Extruded Texture

#### Pressed Texture

<b>Lengths</b>	to 120 in	3,048 mm	99 or 122 in	2,514 or 3,099mm
<b>Widths</b>	to 60 in	1,524 mm	50 in	1,270 mm
<b>Gauges</b>	from 0.028 to 0.250 in	from 0.71 to 6.35 mm	from 0.040 to 0.250 in	from 1.02 to 6.35 mm

**Custom** Blank sizes, gauges on request

### THERMOFORMING GUIDELINES

<b>Mold Shrinkage</b>	0.5 - 0.7%	
<b>Forming Temperature</b>	335 - 370°F	168 - 188°C
<b>Typical Heater Settings (Top)</b>	30 - 50%	
<b>Typical Heater Settings (Bottom)</b>	50 - 70%	
<b>Drying</b>	Not required	

**Attention:** Avoid using cleaners containing quaternary ammonium compounds. In some cases, disinfectants containing quaternary ammonium compounds (QACs) could cause discoloration when left on at elevated temperatures and should be avoided for use on this grade of Boltaron material. For a full cleaning guide, visit [www.boltaron.com/cleaning-and-disinfecting](http://www.boltaron.com/cleaning-and-disinfecting).

DISCLAIMER AND LIMITATION OF WARRANTY: All information contained herein is believed by SIMONA BOLTARON Inc. to be reliable. Typical properties are based on laboratory tests conducted on material samples in accordance with standard test methodology. SIMONA BOLTARON Inc. makes no express or implied warranty that its products will perform in accordance with the data in all conditions and circumstances. To determine suitability for use, users must test applications under actual operating conditions. As a result, ALL EXPRESS OR IMPLIED WARRANTIES IN CONNECTION WITH SIMONA BOLTARON Inc. PRODUCTS INCLUDING WARRANTIES OF MERCHANTABILITY AND FITNESS FOR A PARTICULAR PURPOSE ARE EXPRESSLY DISCLAIMED. RI 8.13.20

9 0 0 0  
S E R I E S

9815  
TRUE PEARL

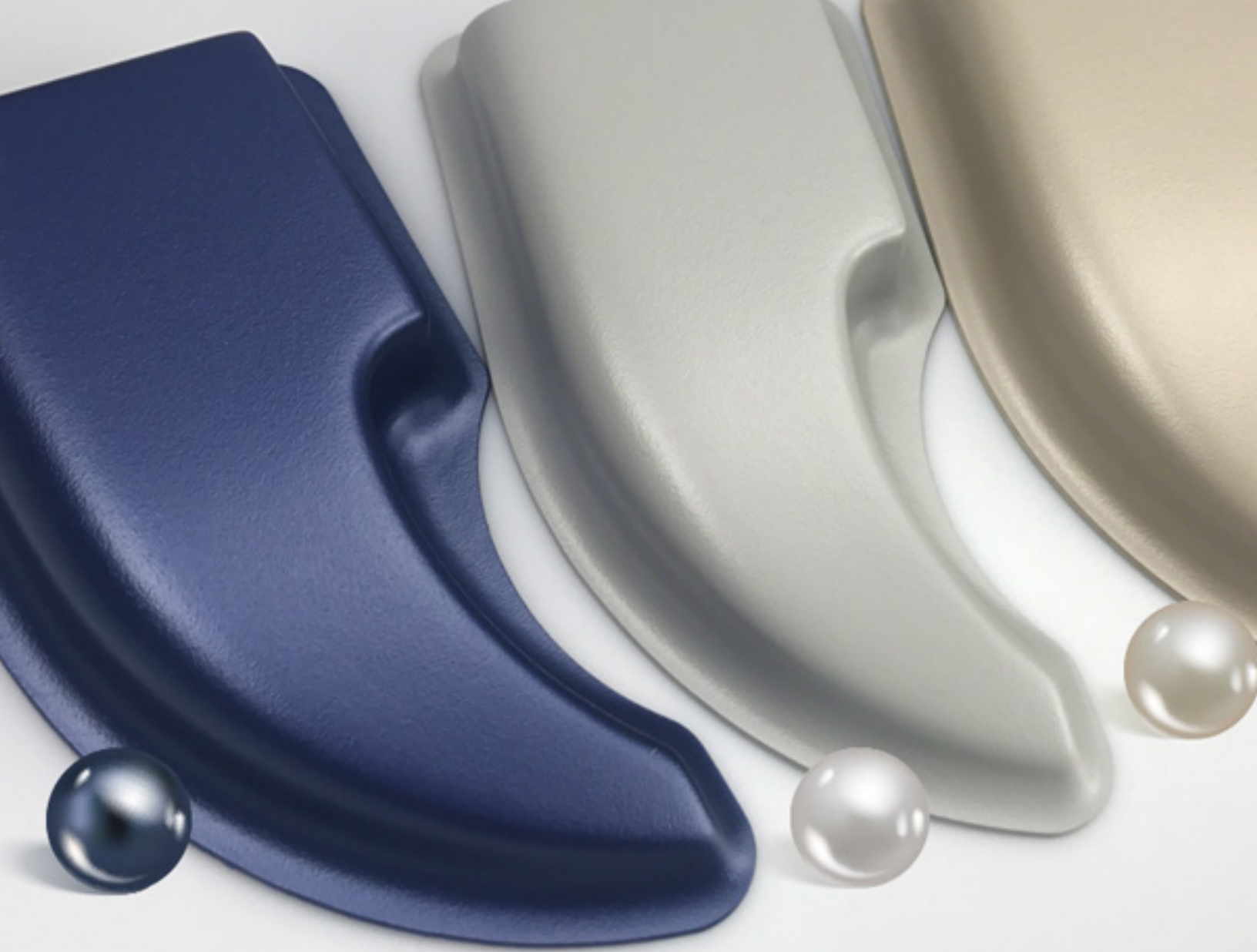
### DESIGN OPTIONS

<b>Colors</b>	Unlimited
<b>Textures</b>	Wide range available
<b>Notes</b>	Choose a high gloss texture to enhance the appearance of the pearlescent effect
<b>Effects</b>	True Pearl
<b>Minimum</b>	500 lb

**SIMONA**  
**boltaron**

[www.boltaron.com](http://www.boltaron.com) | +1 800 342 7444

RELIABILITY MEETS INNOVATION



Material Innovations

## TRUE PEARL

This material upgrade offers more style and designer appeal than standard color sheet. With an iridescent, true pearl pigment integrated through extrusion, the effect is noticeable throughout the sheet. The luster is even further enhanced after thermoforming. It can be color matched to an unlimited range of pearlescent hues, from natural to synthetic tones, and be customized with a wide range of textures.