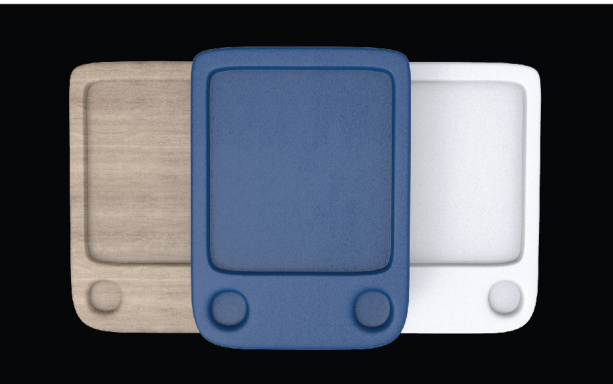


High Performance Surfacing Solutions



Boltaron® 4065MP is a high-performance antimicrobial, fire retardant, 3D formable surfacing laminate for demanding interior applications, utilizing both membrane pressing and flat lamination processes. 4065MP is ideally suited to the rigours and demands of healthcare, retail, display and commercial furniture applications where bonded to MDF and other substrates.

3D processing capabilities afford product designers the ability to incorporate smooth seamless profiles, avoiding the need for edge banding typically associated with HPL surfaces. SIMONA Boltaron offers extended life cycle opportunities and reduced maintenance costs as well as reduced manufacturing costs over HPL surfaced components and solid surface materials.

Characteristics

- Super tough and extremely durable
- Superior cleanability and resistance to aggressive chemicals
- Resistant to cracking and chipping
- Formability in deep draws, sharp corners (Contours, detailed compound logos)
- Excellent for membrane pressing and flat lamination
- Infinite custom colors
- Flexibility allows small radius bends
- Suitable for digital and dye sublimation printing (metallic and pressed textures also available)
- Ability to punch / perforate
- Uniform surface quality
- Scratch resistant surface

Applications

- Bed bases
- Hospital and healthcare furniture
- Over-bed tables
- Bed-side cabinets
- IPS units
- Door and drawer fascia
- Wall and cubicle panels
- Workstations and desktops
- Logo panels and directional signage
- Vehicle interior panels
- Wall and door protection
- Vertical and horizontal display surfaces
- Counters
- Shelving
- Table tops
- Checkout counters

Why choose SIMONA Boltaron?

We produce highly engineered thermoformable sheet that will deliver the results you expect from your high performance finished products. In addition to being ISO certified, we are solution specialists, ready to help you pinpoint the right material and work with you throughout your entire project.

ISO 9001:2015 and AS9100D Certified

DISCLAIMER AND LIMITATION OF WARRANTY: All information contained herein is believed by SIMONA BOLTARON Inc. to be reliable. Typical properties are based on laboratory tests conducted on material samples in accordance with standard test methodology. SIMONA BOLTARON Inc. makes no express or implied warranty that its products will perform in accordance with the data in all conditions and circumstances. To determine suitability for use, users must test applications under actual operating conditions. As a result, ALL EXPRESS OR IMPLIED WARRANTIES IN CONNECTION WITH SIMONA BOLTARON Inc. PRODUCTS INCLUDING WARRANTIES OF MERCHANTABILITY AND FITNESS FOR A PARTICULAR PURPOSE ARE EXPRESSLY DISCLAIMED. RI 3.24.21



AVAILABLE WITH
ANTIMICROBIAL
SIMOGUARD®
TECHNOLOGY

In areas of high physical and visual contact, cleanliness is key. SIMOGUARD® offers hygienic solutions combining superior cleanability and durability with limitless design opportunities for color, texture and pattern.

SIMONA
boltaron

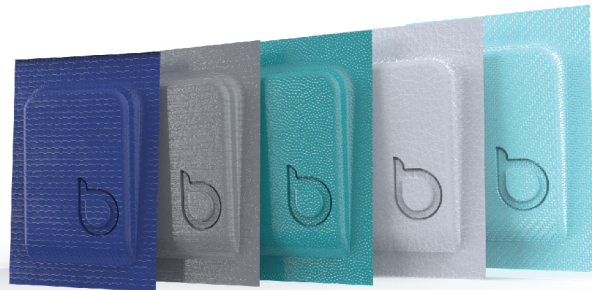
www.boltaron.com | +1 800 342 7444

RELIABILITY MEETS INNOVATION

Boltaron® 4065MP

HIGH PERFORMANCE SURFACING MATERIAL

Greater impact resistance than high pressure laminates, melamine and thermofoils. Membrane pressing can eliminate unsightly seams and delamination problems. Wood core substrates that are membrane pressed or flat laminated with Boltaron® 4065MP sheet look new even after years of impacts, abrasion, harsh cleansers and the general abuse of commercial and institutional environments.



PERFORMANCE DETAILS

PROPERTIES

Specific Gravity (ASTM D792)	1.37	
Hardness Rockwell (ASTM D785)	106	
Izod Impact Notched (ASTM D648)	73 °F 18 ft-lb/in	23 °C 953 J/m
Heat Deflection Annealed (ASTM D648)	165 °F @264 psi	74 °C @1.8 MPa
Heat Deflection Unannealed (ASTM D648)	150 °F @264 psi	65.5 °C @1.8 MPa
Ball Impact Resistance (NEMA LD3 - 2005)	>3,000	
Dart Impact Resistance (NEMA LD3 - 2005)	>1,100	
Taber Abrasion (ASTM D3389) CS-17 wheels, 1000 gram load per wheel, 1000 cycles	0.029 mass loss per revolution, mg/rev	

*Independent lab tests. All tests at 73°F (22.8°C) in dry conditions unless otherwise noted.

ROLL AND SHEET SIZES

Sheet Lengths	to 120 in	3,048 mm
Roll Lengths	Continuous rolls available	
Widths	to 60 in	1,524 mm
Gauges	0.028 in	0.71 mm
Custom	Blank sizes, gauges on request	

MEMBRANE PRESSING TYPICAL PARAMETERS

Cycle Times		
Preheating	45-50 Seconds	
Pressing	40-45 Seconds	
Cooling	35-40 Seconds	
Typical Heater Settings		
Top	257 - 284°F	125 - 140°C
Bottom	172 - 185°F	78 - 85°C
Pressure	45 psi	3 Bars

FLAMMABILITY

UL 94	V-0
EN 13501-1	Under Testing

Resistance to Fungus Growth
Resistance to Bacterial Growth

ASTM G21
ASTM G22

BUILDING
& RETAIL

4065MP
MEMBRANE PRESSED

DESIGN OPTIONS

Color Unlimited
Textures Wide range available
Effects True pearl and woodgrains
Minimum 500 lbs (230 kg)

SIMONA
boltaron

www.boltaron.com | +1 800 342 7444

RELIABILITY MEETS INNOVATION